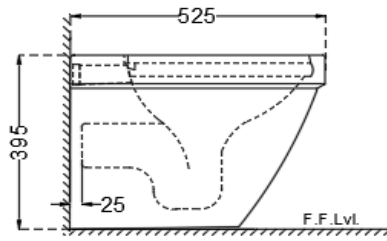
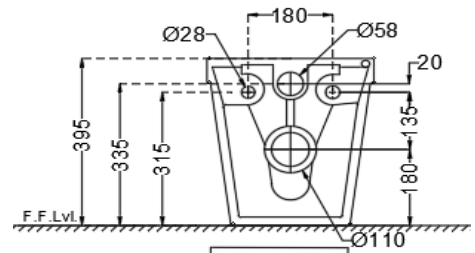


TOP VIEW



SIDE VIEW



BACK VIEW

General Information

Product Code	SLS-WHT-6955P180UFSM
Brand	Jaquar
Colour	White
Type	Back To Wall WC
Material	Ceramic - Vitreous China

Product Specification

Product Dimension	375x525x395 mm
Inner Dimension	275X350 mm
Product Net Weight	28.0 Kg
Product Gross Weight	32.5 kg
Packaging Dimension	550x400x420mm
Outlet	Horizontal
Inlet And Outlet Hole Dimension	Internal diameter of inlet hole dia. $\varnothing 58 \pm 3$ mm External diameter of outlet hole dia. $\varnothing 110 \pm 5$ mm
Waste Hole Horizontal distance	Vertical distance between the Floor and the centre line of the waste outlet hole ≤ 180 mm
Product Features	White Finish, Blind Installation Rimless Bowl Design, Detachable Slim Seat Cover, Dual Flush-2.8/4.8 LPF Material - Vitreous China (VC) Anti germ glaze, Trapwash.

ACCESSORIES INCLUDED

UF Soft Close Slim Seat Cover	SLS-WHT-6103UF
Fixing Kit	ZPS-WHT-FB13
Inlet & Outlet gasket	ZPS-WHT-GK01

ACCESSORIES RECOMMENDATION

Rack bolt	ZPS-SNS-RB07N
Concealed cistern	JCS-WHT-2400,JCS-WHT-2400P,JCS-WHT-2400S,JCS-WHT-2431,JCS-WHT-2431P,JCS-WHT-2431S

CARE AND CLEANING GUIDELINES

- Vitreous china sanitary ware products are fragile in nature and need to be handled with care (to avoid personal injury) at all times during its storage, handling, installation and use thereafter.
- The product is heavy and it is recommended that two persons hold it while it is being fixed.
- Carefully inspect the new product for damage before installation.
- Risk of product damage. Over tightening may cause breakage or chipping of vitreous china.
- Risk of external leakage. Do not lift or rock the bowl after placement.
- Always test your cleaning solution on an inconspicuous area on the product before applying it to the entire surface.
- Do not allow cleaners to sit or soak on the product.
- Use a soft, dampened sponge or cloth to clean. Never use abrasive material like a bristle brush or scouring pad.
- Wipe surfaces clean and rinse completely with water immediately after applying cleaners.
- Clean Chrome, stainless steel surfaces once a week. Do not use cleaners containing chloride on chrome, stainless steel. If used, rinse the surface immediately to prevent corrosion.
- Wherever chrome plating is used on the products, use only warm water to clean and then dry with a soft cloth.

QUALITY MANAGEMENT SYSTEM - ISO 9001

DISCLAIMER: Our every effort has been made to ensure factual accuracy, the information presented subject to changes due to requirements in different sites, markets and/ or countries. All dimensions are in mm (Tolerance ± 5 MM). Jaquar reserves the right to make the necessary amendments at any time without prior notice.

For Installation Refer Actual Product