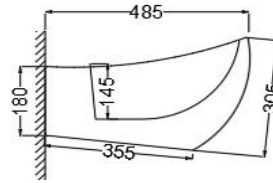
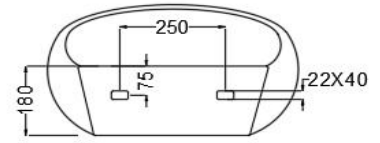


TOP VIEW



SIDE VIEW



BACK VIEW

**General Information**

Product Code	ACS-WHT-87801
Brand	Jaquar
Colour	White
Type	Wall Mounted Basin
Material	Ceramic-Fine Fire Clay (FFC)

**Product Specification**

Product Dimension	635X485X305 mm
Basin Inner Dimension	590X330X145 mm
Product Net Weight	19.5 kg
Product Gross Weight	22 kg
Packaging Dimension	660x350x490 mm
Outlet	Vertical
Waste Hole Dimension	Tap hole dia. $\varnothing 35 \pm 2$ mm
	Internal diameter of outlet hole dia. $\varnothing 45 +2/-1$ mm
	Horizontal distance between the centre line of the tap hole and the centre line of the waste outlet hole $\leq 145$ mm
Product Feature	Stylish Design With Round Shape Basin With Over Flow Hole And Tap Hole Anti Bacterial Glaze on Ceramic Smooth Glaze Surface Material - Vitreous China (VC) Product With Complete Genuine Accessories

**ACCESSORIES INCLUDED**

Rack bolt	ZPS-MST-RB03
Overflow hole Cap	ZPS-WHT-9012B

**CARE AND CLEANING GUIDELINES**

- Vitreous china sanitary ware products are fragile in nature and need to be handled with care (to avoid personal injury) at all times during its storage, handling, installation and use thereafter.
- The product is heavy and it is recommended that two persons hold it while it is being fixed.
- Carefully inspect the new product for damage before installation.
- Risk of product damage. Over tightening may cause breakage or chipping of vitreous china.
- Risk of external leakage. Do not lift or rock the bowl after placement.
- Always test your cleaning solution on an inconspicuous area on the product before applying it to the entire surface.
- Do not allow cleaners to sit or soak on the product.
- Use a soft, dampened sponge or cloth to clean. Never use abrasive material like a bristle brush or scouring pad.
- Wipe surfaces clean and rinse completely with water immediately after applying cleaners.
- Clean Chrome, stainless steel surfaces once a week. Do not use cleaners containing chloride on chrome, stainless steel. If used, rinse the surface immediately to prevent corrosion.
- Wherever chrome plating is used on the products, use only warm water to clean and then dry with a soft cloth.

**QUALITY MANAGEMENT SYSTEM - ISO 9001**



DISCLAIMER: Our every effort has been made to ensure factual accuracy, the information presented subject to changes due to requirements in different sites, markets and/ or countries. All dimensions are in mm (Tolerance  $\pm 5$  MM). Jaquar reserves the right to make the necessary amendments at any time without prior notice.

# For Installation Refer Actual Product